

TRIBAL

Release Notes

K2

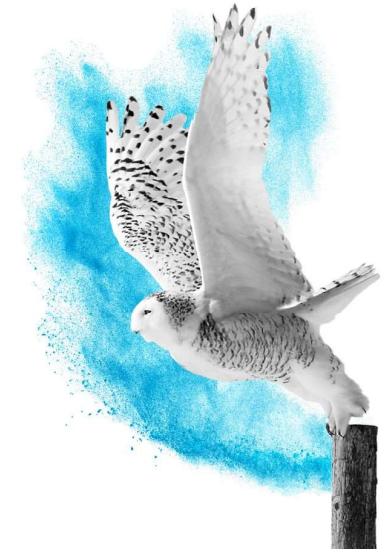
Version: v2.3.0.0

Prepared for: User

Prepared by: Tribal

Document Sensitivity Level: Protected

July 2025



© Tribal 2025

Unless otherwise stated, Tribal owns the copyright in this document including the content, page layout, graphical images, logos, photographs and trademarks. With the exception of permitted fair dealing under the Copyright, Designs and Patents Act 1998, no part of this document may be reproduced or transmitted in any form or by any means or stored in any electronic retrieval system without prior written permission of Tribal.

Prelims

Disclaimer

All reasonable effort has been made to ensure this documentation is complete and accurate at the time of distribution. Information in this documentation is subject to change without notice.

Subject to any applicable limitations, Tribal and its employees shall not be liable nor responsible to any person or entity with respect to loss or damage arising from the information contained in this documentation.

Trademarks

Windows is a trademark of the Microsoft Corporation. All other product names and services identified throughout this documentation are trademarks or registered trademarks of their respective companies.

Copyright

© 2025 Tribal

Tribal software is protected by international copyright laws.

The Tribal logo is an international trademark.

No part of this documentation shall be reproduced, stored in a retrieval system or transmitted in any form, electronic, mechanical, photocopying, recording or otherwise, for any purpose without written permission of Tribal. Where permission is given, the Tribal trademark is to be retained on all such copies.

The software described in this document is furnished under a license agreement and may be used or copied only in accordance with the terms of the license agreement. It is against European and International law to copy the software on any other medium except as specifically allowed in the license agreement.

Support

Telephone:

EMEA +44 (0) 845 873 0153

Web page:

<https://tribalcommunities.force.com>

Should you wish to comment on the clarity or content of this document, please call the helpdesk.

Illustrations

Any Screenshots in this guide are intended as a representation of what you may see on screen. Because of the ability to customise the terminology and display settings used in the application, there may be some difference between what is shown in the guide and what you see on your screen.

Technical Update

The 2.3.0 version of K2 was released: this version completes the migration of K2 Mobile from Xamarin.Forms to .NET MAUI, enabling us to support versions Android 13 and onwards. Additionally, K2 now supports the Microsoft Visual C++ Redistributable (2015–2022), improving compatibility across modern Windows environments and aligning with current system requirements. This release also includes significant updates to our User Interface framework, enhancing overall platform stability and maintainability.

Statement of De-support

Rolling Product De-Support

Tribal operates a rolling de-support programme for major versions of K2. We also offer specific version support to run alongside the de-support programme to ensure that if customers are running older major versions of products, then they are running a supported version.

The following table details which versions will be supported after each major release. It is important to ensure that you have upgraded to at least these versions before the dates specified.

Month	Year	Major Release ▼	Product	Supported Version
July	2025	2.3.0	K2, Portal, Mobile	2.2.13, 2.2.14, 2.3.0
April	2025	2.2.14	K2, Portal, Mobile	2.2.12, 2.2.13, 2.2.14
January	2025	2.2.13	K2, Portal, Mobile	2.2.11, 2.2.12, 2.2.13

It is very important for us to ensure that all customers are using up to date versions. Hopefully, you will agree that this procedure helps ensure that each user is getting the most out of the software in terms of functionality and when engaging with the support team.

Tribal no longer supports the following products/configuration(s). The reasons for de-supporting products are to allow us to focus our development efforts on best practices, latest technological solutions and ensure our products are being run on secure and supported platforms from other software providers.

- ASP.Net Portal
- Windows 7 Operating System
- Windows Phone Solution
- HTTP Configuration
- Safari (Web Browser)
- Android 12 Snow Cone (API 32) and lower
- Xamarin.Forms Mobile Application
- Microsoft Silverlight

Browser Support

Google Chrome

We support Google's free web browser; Google Chrome. Its current stable version is 138. This version is used to test the K2 MVC Portal, please ensure your browser(s) is up-to-date to avoid any issues. For Windows users, you will need to be on Windows 10 or later to use this browser (Older versions are supported but we do not support these for K2).

Microsoft Edge

Microsoft recommends using Microsoft Edge as your default browser and supports Internet Explorer 11 (IE11) via IE mode. This mode enables backward compatibility with IE11 and according to Microsoft this support will last till 2029.

Please go [here](#) for a list of Microsoft Edge supported operating systems.

Additionally, Microsoft will provide notice one year prior to retiring IE mode, and K2 will monitor this update and inform our customers accordingly. However, we do not recommend using this mode because our quality assurance testing has not been conducted using this setting.

Mozilla Firefox

We also support the Firefox browser and recommend customers to use 141.0 or higher. As always, the K2 Development team will monitor de-supported and stable versions to update the product, whilst informing our customers what software they can/should be using.

Platform	Supported Versions
Browser	Firefox
Browser	Google Chrome
Browser	Microsoft Edge

Advanced Technical De-Support

In-line with Tribal's policy of falling in-line with Microsoft's support of operating systems and platforms, we would like to make all customers aware of the next technical de-supports in line with Microsoft's policies.

All customers should ensure that they migrate away from these platforms in advance of the Tribal de-support which will be the closest Tribal release date before the Microsoft de-support.

Tribal cannot offer support of its products on platforms that are not supported by Microsoft.

De-Supported Versions	Last Supported Version of K2	MS End of Mainstream Support Date	Platform
SQL Server 2012 (Latest Service Pack)	2.1.226 - 31st December 2020	11th July 2017	Database
SQL Server 2014 (Latest Service Pack)	2.1.226 - 31st December 2020	09th July 2019	Database
SQL Server 2016 (Latest Service Pack)	2.2.2 - 30th April 2022	13th July 2021	Database
SQL Server 2017 (Latest Service Pack)	2.2.4 - 30th November 2022	10th November 2022	Database
SQL Server 2019 (Latest Service Pack)	TBC	14th January 2025	Database
SQL Server 2022 (Latest Service Pack)	TBC	11th January 2028	Database
Windows 10	2.3.2 - 31st January 2026	14th October 2025	OS
Windows 11	TBC	13th October 2026	OS
Windows 8.1	2.1.228 - 28th June 2021	1st September 2018	OS
Windows Server 2016	2.2.2 - 30th April 2022	11th January 2022	OS
Windows Server 2019	2.2.9 - 31st January 2024	09th January 2024	OS
Windows Server 2022	TBC	14th October 2031	OS

Our policy is that we end the support for MS products based on the Mainstream Support End date, if you are paying for extended support with MS you need to contact warren.reynolds@tribalgroup.com to make us aware.

Support Started

Platform	Supported Versions	First Version to Support
Database	SQL Server 2019 (Latest Service Pack)	2.1.224
Database	SQL Server 2022 (Latest Service Pack)	2.2.8
Mobile App	Android version 13	2.2.9
Mobile App	Android version 16	2.3.0
OS	Windows Server 2019 (Latest Service Pack)	2.1.226
OS	Windows Server 2022	2.2.8
OS	Windows Server 2025	2.3.2

Future Releases

The release dates for the next four releases are as follows: -

Release number	Release Date
2.3.1	31st October 2025
2.3.2	31st January 2026
2.3.3	30th April 2026
2.3.4	31st July 2026

ID	Type	Module ▲	Header	Release Notes
560835	Enhancement	Admin	Role \ Associated Items \ Permissions	K2 has been enhanced to include a new permission called 'UserLinkBudgetOnly'. This permission, regardless of setting (view, edit, full), allows a user to use the 'User link to budget' task on a 'User' record without requiring the 'Budget' permission to link or unlink 'Budget(s)' from a user. Previously, a user would require 'User' permission at edit or full and 'Budget' to access this functionality. This allows for better delegation of roles and prevents unnecessary access to the 'Budget' screen.
590385	Defect	Admin	Tools \ Admin \ Audit Log Report	An bug has been resolved on the 'Audit Log Report' so that the 'User' list is now displayed alphabetically.
447449	Defect	Condition Survey	Condition Survey \ Condition Survey Editor	A bug has been resolved in which the 'Element ' field did not render well on the 'Condition Survey Editor' at 125% and 150% text size. This has now been improved so it's usable on all supported sizes.
502538	Enhancement	N/A	K2 Client \ All areas	The K2 Smart Client has been enhanced to use the latest version of the user interface controls. This mitigates against security vulnerabilities of old controls and allows for modernisation of user control features. Example: The 'Calendar' now looks and feels different. NOTE: This change has increased the size of the client files to approx 238Mb. This may cause the K2 client to take slightly longer to install or update.

ID	Type ▲	Module	Header	Release Notes
412197	Defect	Core	Organisation \ Business Unit \ Business Unit (reference data) \ Business Unit Levels	A bug has been resolved for the business unit 'Levels' reference data that allowed more than 50 characters to be entered, when only a maximum of 50 characters could be saved. This has now been resolved, so that no more than 50 characters can be input. In addition to this, we have limited the special characters that can be entered. The 'Levels' will only allow for characters with accents, a hyphen (-), or an underscore (_). Any other characters cannot be entered.
509860	Defect	Core	Search \ Document	A bug has been resolved in which the 'Size (KB)' was not ordered by the size of the file, meaning it would incorrectly order as 1, 10, 100, 2, 20, 200, 3. Please note: We have also addressed a bug where the default search and advanced search for document had different labels for the 'Size (KB)' column.

ID	Type	Module ▲	Header	Release Notes
469124	Enhancement	Core	Building \ Associated Items \ Audit Trail	The 'Audit Trail' for 'Building' has been enhanced so that it now captures the 'Number of Storeys' field. Please note: If you use the K2 Administrator Utility to rename this field, the updated name will also be captured in the 'Audit Trail'.
579100	Enhancement	Core	Views \ Panels \ Documents	An enhancement has been made to the 'Documents' panel to allow for either single or multiple document downloads. As part of this change, a checkbox has been added to all non-link only documents to select them as ready for download. Once the document(s) have been selected, the download toolbar icon will be enabled and can be used to download the records. All selected documents will be zipped, and the user can choose the destination of the download. All documents can be downloaded, provided the user has at least 'View' access to 'Documents', and the relevant document access level to see the record. Please note: The 'Download' button is only enabled for the 'Folder View' display setting.
598901	Enhancement	Core	K2	K2 has been enhanced to support the latest 'Microsoft Visual C++ Redistributable(2015-2022)'. Older versions of this should be removed from the application servers hosting K2.

ID	Type	Module ▲	Header	Release Notes
568098	Enhancement	Energy	K2 Reporting	An enhancement has been made to allow the 'EPC Status' on a 'Building' to be captured in custom reports created against a 'Building'.
585312	Defect	Finance	Order \ Order Editor \ Order Items	A bug has been resolved in which the 'Order Items' would not render correctly on 125% or 150% text size when the user did not have access to the 'Schedule of Rates'. This has now been resolved, so that 'Order Items' can be updated and input as required.
548361	Defect	Interface	Integra Invoices Interface	A bug has been resolved, which prevented the cancelled Orders file from being generated. To get this fix, please run the latest objects script against the database.
564595	Enhancement	Interface	Integra Interface	An enhancement has been made to the Integra Interface to allow for more elements to be processed, as well as further reporting changes. To get these latest changes, please ensure the latest objects script has been executed against the database and the latest report is uploaded.

ID	Type	Module ▲	Header	Release Notes
404748	Enhancement	Mobile	K2 Mobile	The K2 Mobile app has been updated to support Android 13 and above.
440148	Defect	Mobile	K2 Mobile	The bug has been resolved which meant the signature pad functionality was not implemented in the first release. Now, the functionality of the signature pad has been restored.
513262	Defect	Mobile	K2 Mobile	A bug has been resolved with the Maui version of the K2 Mobile in which we've fixed the button spacing between the play and the ellipsis buttons on the 'Assessment' and 'Forms' pages. This spacing is to keep it consistent with the rest of the app.
534635	Defect	Mobile	K2 Mobile	A bug has been resolved that caused the latest version of the K2 Mobile to intermittently crash when first connecting to the mobile service. Please note: There is a known issue in which spending too long on the password and PIN entry page can cause a timeout error to occur. If this happens, please just close the app, launch it and re-enter the PIN.
546189	Defect	Mobile	Dashboard \ Maintenance \ Job \ Job Items	A bug has been resolved which prevented a 'Job Item' from being updated. Now, status can be updated by selecting the 'Job Item' and pressing the related button to mark the status as 'Done', 'Not Done' or 'Transferred'.

ID	Type	Module ▲	Header	Release Notes
569898	Enhancement	Projects	Contract \ Contract Editor \ Toolbar \ Unauthorise	The 'Contract Editor' toolbar has been enhanced to include an 'Unauthorise' button when using the 'Authorisation Matrix'. Previously, when authorising a 'Contract', there was no way to 'unauthorise' it with the 'Authorisation Matrix' enabled. Now, the toolbar includes a button to do so. You will need the 'ContractUnauthorise' permission assigned to use this functionality. Please note: We have also added the 'Unauthorise' action to the 'Authorisation Information' button throughout K2.
594594	Defect	Projects	Project \ Associated Items \ Project Forecast	A bug has been resolved in which an error would occur when trying to save the 'Project Forecast' when the local machine's regional format was set to 'English (New Zealand)'. This has now been resolved, and the 'Project Forecast' can be saved as required.
595413	Defect	Projects	Project \ Associated Items \ Project Event(s)	A bug has been resolved in which the user in the 'Assigned To' field was incorrectly being assigned to the logged in user after pressing 'OK', rather than remembering the correct selection. This has now been resolved, and the 'Assigned To' functionality will work as intended.
454697	Enhancement	Trees	Functions \ Tree Management \ New Tree	An enhancement has been made to the 'Tree' module to completely change the 'Tree Editor'. Further changes are still outstanding, but so far, it has been updated to allow multiple stems and tree canopy details to be captured. Both of these inputs then perform calculations for 'Root Protection Area' (RPA) and 'Canopy Spread'. The basic 'Search' is also available to allow access to the 'Trees' created. Please note: The 'Tree Summary', 'Attributes', 'Tasks' and 'Associated Items' are still to follow.